

營建管理

Construction Management



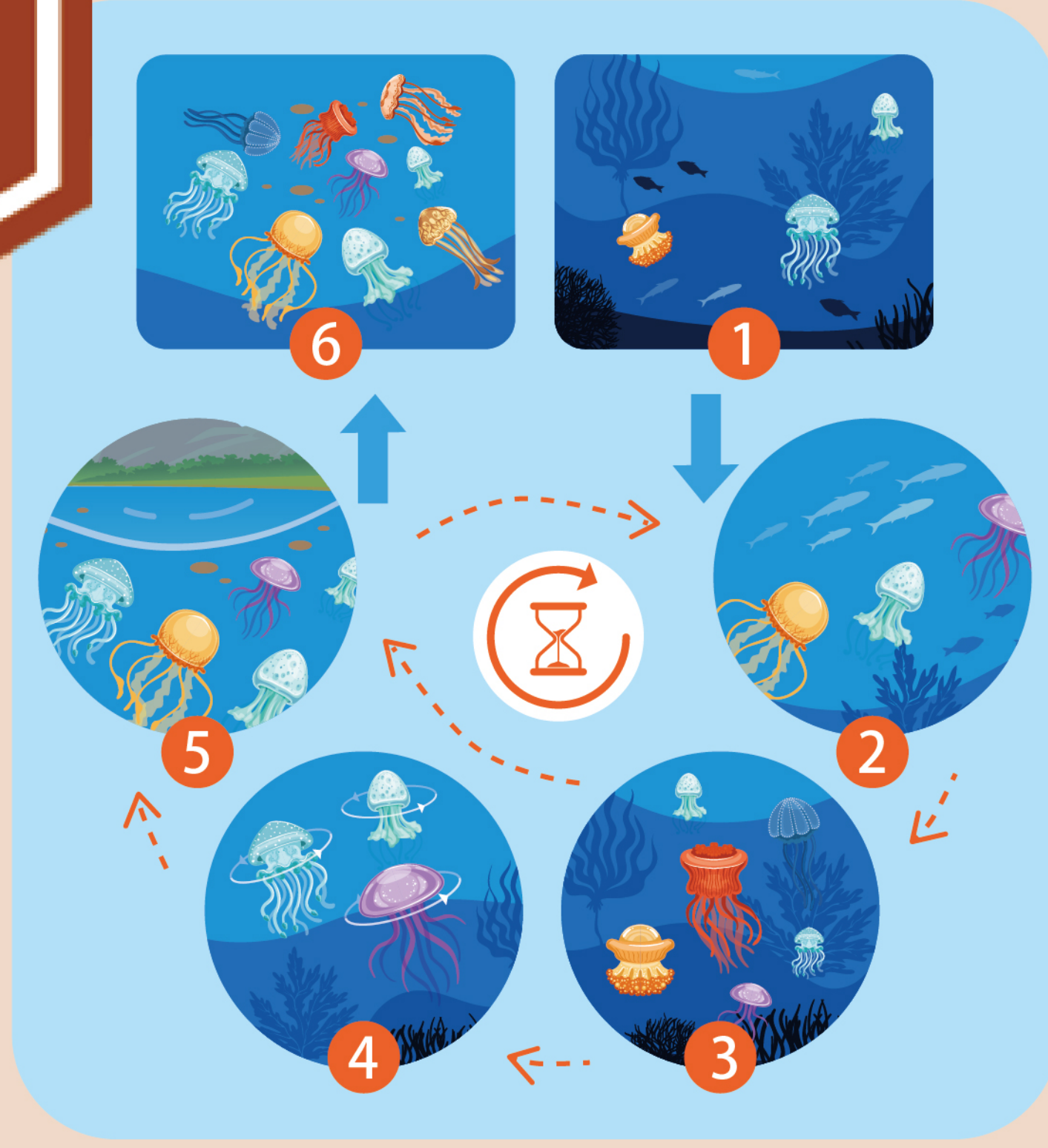
專案智慧與管理研究室

Project intelligence & Management (PiM) Research Lab

主持人：周瑞生 講座教授 (Jui-Sheng Chou)



Sustainable Development & Energy Policy



Bio-Inspired Jellyfish Search Optimization



FBI Inspired Meta-Optimization



Engineering Failure Analysis

永續工程
專案計量分析

土木水利工程資料探勘

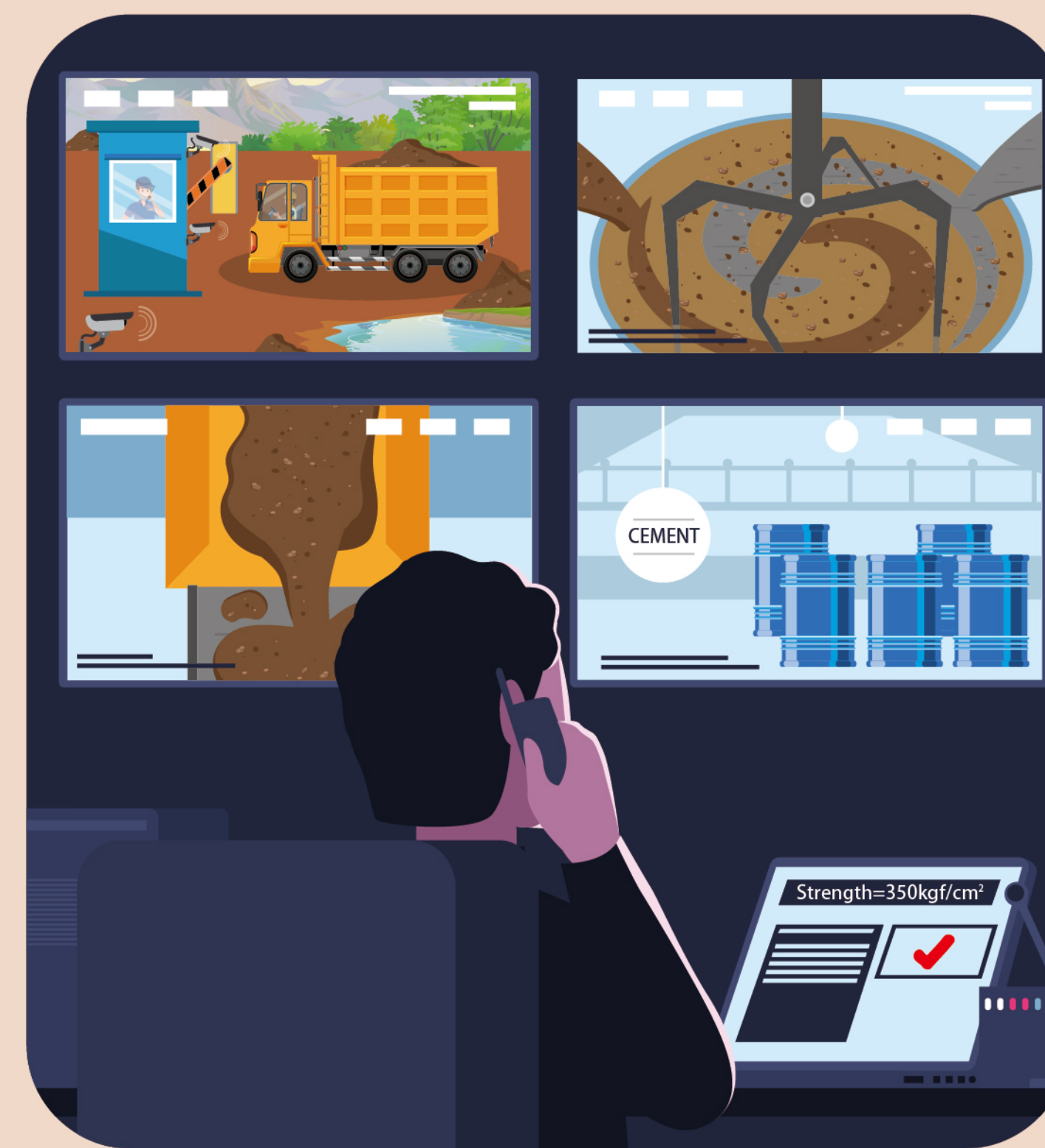
決策、風險與
災害管理



Transport Service Management



Building Energy Management



Artificial Intelligence in Civil Engineering



Disaster Management



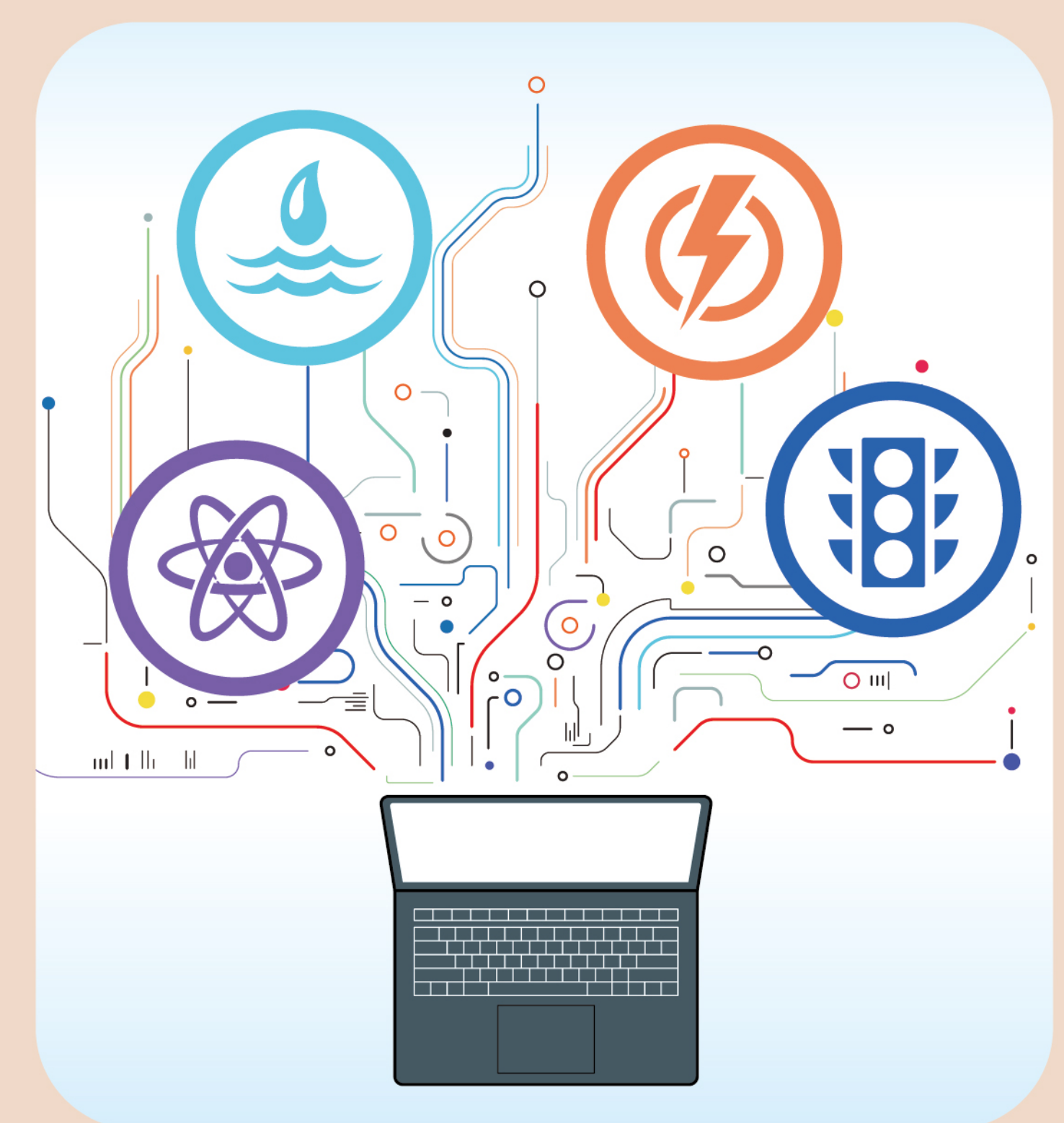
Quantitative Project Management



Construction Management



Forecasting Financial Time Series



Decision & Risk Analysis



國立臺灣科技大學營建工程系

Dept. of Civil & Construction Engineering

